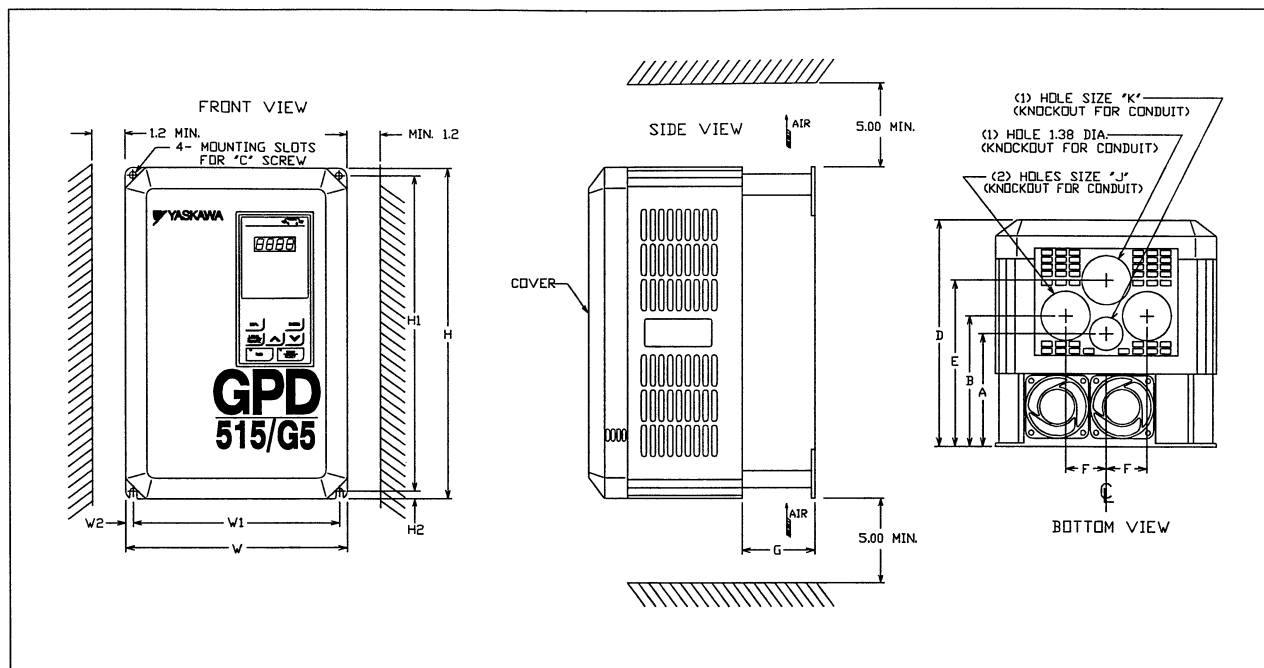


**DIMENSIONS: GPD515/G5 BASIC DRIVE NEMA 1**
**S - 5370A**


RATED INPUT	MODEL # GPD515C-	OUTPUT CURRENT RATING (AMPS)	DIMENSIONS IN INCHES														APPROX. WEIGHT (LBS.)	
			MOUNTING		H	W	H2	W2	A	B	C	D	E	F	G	J		K
			H1	W1														
208/ 230	A003	3.2	10.47	4.96	11.02	5.51	.28	.28	---	3.24	#10	6.30	4.60	1.07	1.53	1.09	---	6.5
	A006	6	10.47	4.96	11.02	5.51	.28	.28	---	3.24	#10	6.30	4.60	1.07	1.53	1.09	---	6.5
	A008	8	10.47	4.96	11.02	5.51	.28	.28	---	3.24	#10	6.30	4.60	1.07	1.53	1.09	---	6.5
	A011	11	10.47	4.96	11.02	5.51	.28	.28	---	3.24	#10	7.09	4.60	1.07	1.53	1.09	---	10
	A017	17.5	10.47	4.96	11.02	5.51	.28	.28	---	3.24	#10	7.09	4.60	1.07	1.53	1.09	---	10
	A027	27	11.22	7.32	11.81	7.87	.31	.28	4.08	4.67	1/4	8.07	5.93	1.45	2.60	1.38	.88	12
	A036	36	11.22	7.32	11.81	7.87	.31	.28	4.08	4.67	1/4	8.07	5.93	1.45	2.60	1.38	.88	13
	A054	54	14.37	9.29	14.96	9.84	.30	.28	5.35	5.78	1/4	8.86	6.93	2.01	3.15	1.73	.88	24
A068	68	14.37	9.29	15.75	9.84	1.08	.28	5.35	5.78	1/4	8.86	6.93	2.01	3.15	1.73	.88	24	
460	B001	1.8	10.47	4.96	11.02	5.51	.28	.28	---	3.24	#10	6.30	4.60	1.07	1.53	1.09	---	6.5
	B003	3.4	10.47	4.96	11.02	5.51	.28	.28	---	3.24	#10	6.30	4.60	1.07	1.53	1.09	---	8.8
	B004	4.8	10.47	4.96	11.02	5.51	.28	.28	---	3.24	#10	7.09	4.60	1.07	1.53	1.09	---	10
	B008	8	10.47	4.96	11.02	5.51	.28	.28	---	3.24	#10	7.09	4.60	1.07	1.53	1.09	---	10
	B011	11	10.47	4.96	11.02	5.51	.28	.28	---	3.24	#10	7.09	4.60	1.07	1.53	1.09	---	10
	B014	14	11.22	7.32	11.81	7.87	.31	.28	4.08	4.67	1/4	8.07	5.93	1.45	2.60	1.38	.88	13
	B021	21	11.22	7.32	11.81	7.87	.31	.28	4.08	4.67	1/4	8.07	5.93	1.45	2.60	1.38	.88	13
	B027	27	14.37	9.29	14.96	9.84	.30	.28	5.35	5.78	1/4	8.86	6.93	2.01	3.15	1.73	.88	24
B034	34	14.37	9.29	14.96	9.84	.30	.28	5.35	5.78	1/4	8.86	6.93	2.01	3.15	1.73	.88	24	
600	C003	3.5	10.47	4.96	11.02	5.51	.28	.28	---	3.24	#10	7.09	4.60	1.07	1.53	1.09	---	9
	C004	4.1	10.47	4.96	11.02	5.51	.28	.28	---	3.24	#10	7.09	4.60	1.07	1.53	1.09	---	9
	C006	6.3	11.22	7.32	11.81	7.87	.31	.28	4.08	4.67	1/4	8.07	5.93	1.45	2.60	1.38	.88	13
	C010	9.8	11.22	7.32	11.81	7.87	.31	.28	4.08	4.67	1/4	8.07	5.93	1.45	2.60	1.38	.88	14
	C012	12.5	11.22	7.32	11.81	7.87	.31	.28	4.08	4.67	1/4	8.07	5.93	1.45	2.60	1.38	.88	14
	C017	17	14.37	9.29	14.96	9.84	.30	.28	5.35	5.78	1/4	9.29	6.93	2.01	3.15	1.73	.88	29
	C022	22	14.37	9.29	14.96	9.84	.30	.28	5.35	5.78	1/4	9.29	6.93	2.01	3.15	1.73	.88	29

FOR REFERENCE ONLY UNLESS PROPERLY ENDORSED.